



## **Release Notes**

**Access Control and Security Management Software**



Copyright © 2013 Tyco International Ltd. and its Respective Companies. All Rights Reserved. All specifications were current as of publication date and are subject to change without notice. EntraPass, Kantech and the Kantech logo are trademarks of Tyco International Ltd. and its Respective Companies.

## Table of Contents

|  |          |
|--|----------|
| <b>Purpose of this Document .....</b>                  | <b>1</b> |
| <b>Welcome to the 6.00 Version of EntraPass .....</b>  | <b>1</b> |
| <b>Software Package .....</b>                          | <b>1</b> |
| <b>System Optimization .....</b>                       | <b>1</b> |
| Minimum System Requirements .....                      | 1        |
| Recommended System Requirements .....                  | 1        |
| <b>New Features .....</b>                              | <b>3</b> |
| New EntraPass Web .....                                | 3        |
| New EntraPass Go .....                                 | 6        |
| Access Level Exception .....                           | 6        |
| Dynamic Video View .....                               | 9        |
| Panasonic Video Recorder SDK 6-00-17 Integration ..... | 9        |
| New Version of the American Dynamic SDK .....          | 9        |
| New Holiday User Interface .....                       | 10       |

## Purpose of this Document

This document is intended for users and installers of the EntraPass Access Control System who are already familiar with the product. Its purpose consists in delivering late-breaking information about the 6.00 version of EntraPass Global Edition. This objective will be achieved by way of contextual screens and simplified descriptions.

## Welcome to the 6.00 Version of EntraPass

Welcome to this latest version of EntraPass, featuring an interesting range of brand new functionalities such as the New EntraPass Web, EntraPass Go, Access Level Exception, Dynamic Video View, a new Holiday user Interface, etc...

## Software Package

The installation media (USB flash drive or DVD) includes the basic components of EntraPass Global Edition:

- 1 Server and 1 server workstation
- 4 additional workstations
- 1 Global gateway
- 1 WebStation/Mobile license (must be activated for usage)
- SmartLink

**NOTE:** Each Global Gateway application includes one Multi-Site Gateway when the Dual Gateways option is enabled. This option does not require any additional license.

The installation USB drive or DVD also includes advanced system components. They require an additional license:

- 1 or 8 additional workstation applications (up to 128 + 1)
- 128 Global and 40 Multi-Site gateways
- Redundant Server & Mirror Database
- Oracle/MS-SQL Interface
- EntraPass Video Vault
- EntraPass WebStation (1 or 3 license packages with a maximum of 50 concurrent licenses).

For details on EntraPass utilities and new Global Edition features, please refer to the EntraPass Reference Manual DN1316.

## System Optimization

### Minimum System Requirements

The following system requirements apply to the EntraPass Server, Redundant Server, Video Vault, Oracle/MS-SQL Interface (CardGateway), Multi-site Gateway, SmartLink and Workstation.

- Dual Core processor.
- 4GB RAM.
- PCI Express graphics card with 512MB memory and DirectX 9.0 support.

**NOTE:** The EntraPass Server and the EntraPass Redundant Server should be installed on different computers.

### Recommended System Requirements

The following system requirements apply to the EntraPass Server, Redundant Server, Video Vault, Oracle/MS-SQL Interface (CardGateway), Multi-site Gateway, SmartLink and Workstation.

- Intel i5 processor or equivalent.
- 8GB RAM.
- 7200rpm, 1TB Hard Drive
- PCI Express graphics card with 1GB memory and DirectX 9.0 support.

**NOTE:** For Hattrix system requirements, please refer to Hattrix Release Notes.

- 10/100 Base-T network adaptor.

**NOTE:** Having both EntraPass Server and EntraPass Redundant Server installed on the same computer is not recommended.

| Tested and recommended OS with EntraPass 6.00 |                |
|---|----------------|
| Windows 8                                     | ✓ (see Note 1) |
| Windows 2008 Server R2 32 and 64-bit          | ✓              |
| Windows 7 Pro 32 and 64-bit                   | ✓              |
| Windows Vista Pro 32 and 64-bit               | ✓              |
| Windows Server 2003 32 and 64-bit             | ✓              |
| Windows XP Pro 32-bit                         | ✓              |

**NOTE 1:** Consult the Kantech website for a list of known limitations.

**NOTE 2:** EntraPass 6.00 has not been tested with Windows Server 2012.

## New Features

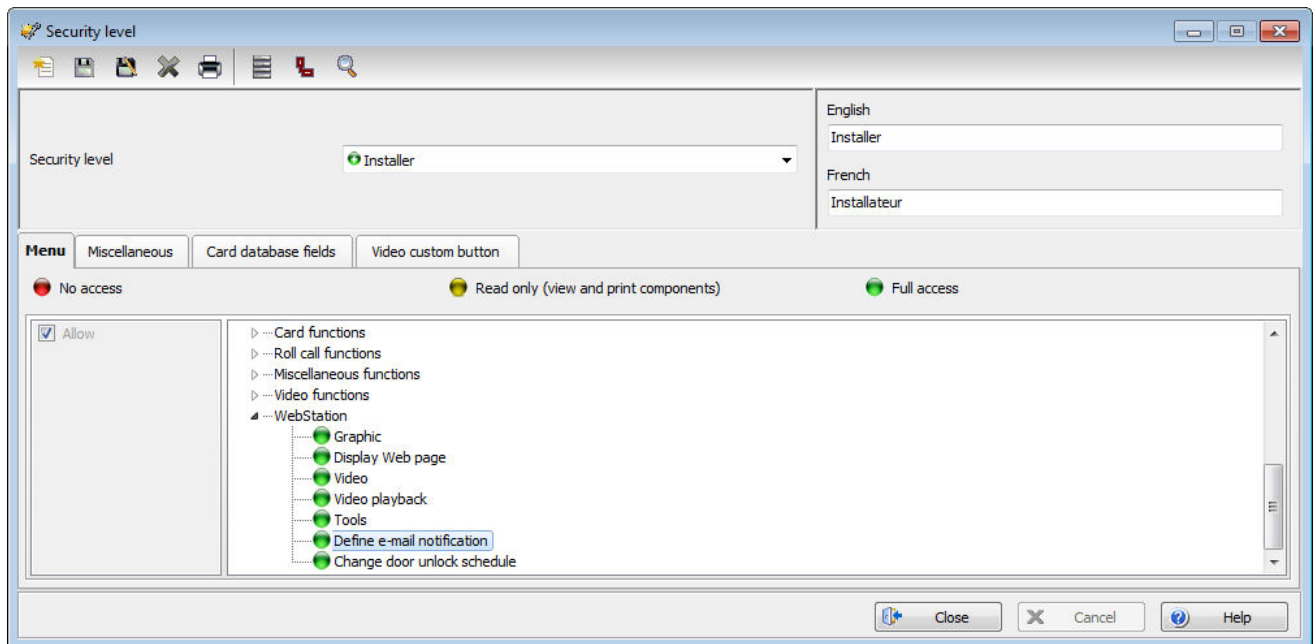
### New EntraPass Web

**NOTE:** For more information about the EntraPass Web installation procedure, please refer to Application Note DN2087.



- IIS is now automatically installed before EntraPass Web by the EntraPass Installshield.
- Changes have been made to **SmartLink** to support the new EntraPass Web (Detailed information will be presented in an Application Note to be released soon).

- **Security level** has been modified in EntraPass to include the **WebStation** email notification feature.



- A picture of the operator can now be added.

## Installation Procedure

### ASP.NET Activation

- 1 Click on **Start** menu.
- 2 Click on **Control Panel**.
- 3 Click on **Programs and Features**.
- 4 Click **Turn windows features on or off**.
- 5 In the **Windows Features** dialog, check **Internet Information Services**.
- 6 Expand **Internet Information Services** -> **World Wide Web Services** -> **Application Development Features**, then check **ASP.NET**.
- 7 Click **OK**.
- 8 Wait while Windows makes changes to features. This might take several minutes.

### EntraPass Web Installation

- 1 Launch the EntraPass setup MSI called **Tyco.Entrapass.WebSetup.msi**.
- 2 You might be asked to install the **Microsoft Framework 4.0**. If not, go to step 6.
- 3 Download the **Microsoft .NET Framework 4** (Web Installer), then launch it.
- 4 Follow the instructions for **Microsoft Framework 4.0** installation.
- 5 Accept to restart your computer.
- 6 Launch again **Tyco.Entrapass.WebSetup.msi**.
- 7 Click **Next**.
- 8 Enter the network address and port for the **SmartService** server.
- 9 Click **Next**.
- 10 Chose the web protocol (http/https), then click **Next**.
- 11 Click **Next** to confirm the installation.
- 12 Once installation is finished, click **Close**.

### Internet Information Services

- 1 Open **Internet Information Services (IIS) Manager**.
- 2 In the left part, expand your server (PC-NAME) then **Sites** and click on **Default Web Site**.
- 3 In the right panel, under **Manage Web Site**, click on **Restart**.
- 4 In the left panel, select your server.

- 5 In the right panel, under **Manage Server**, click on **Restart**.

#### Open the EntraPass Web Application

- 1 Double click on the EntraPass Web shortcut on your desktop.
- 2 Download and Install **Silverlight**.
- 3 Re-launch **EntraPass Web** then click **Install**.
- 4 **EntraPass Web** is now open.
- 5 Type a valid EntraPass login name.

**NOTE:** If the **EntraPass Web** application is not working, close the application, wait for 2 minutes and then retry (sometimes IIS take a few minutes to configure itself, time out can happened at first launching).

#### Connection

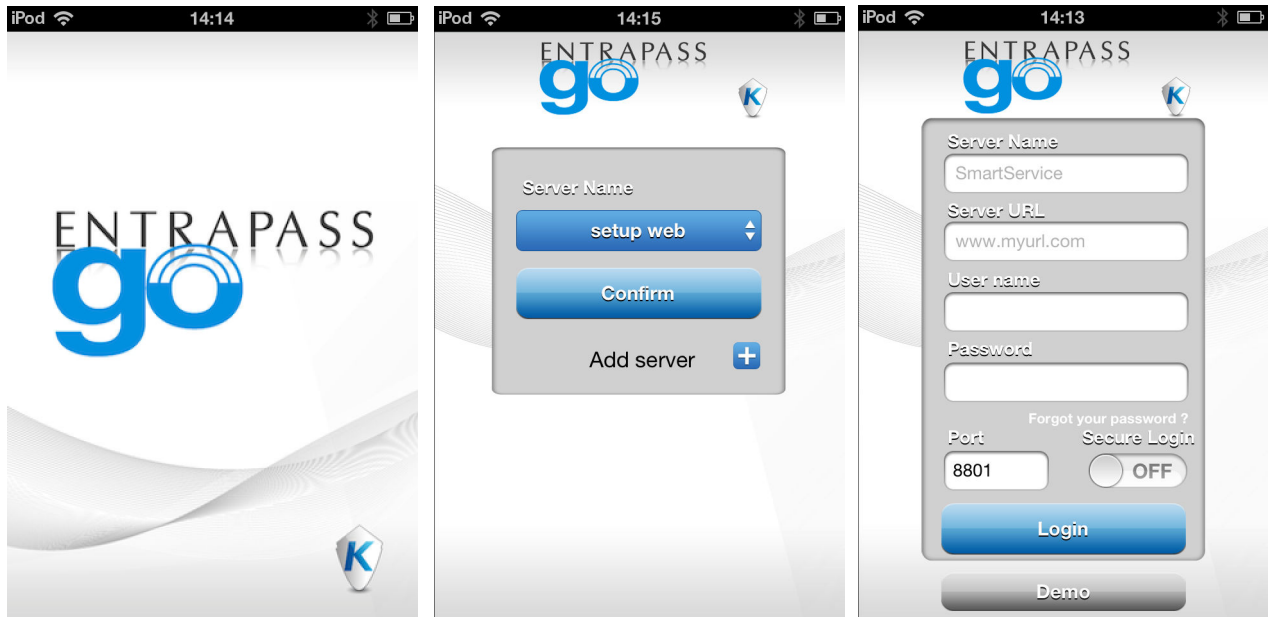
To connect to EntraPass Web, enter: **The server address/EntraPassWeb**.

#### EntraPass Web vs EntraPass WebStation

|  | EntraPass Web | WebStation |
|--|---------------|------------|
| Customizable desktop (DockViews)   | ✓             |            |
| Monitoring (Operation)   |               |            |
| Users  | ✓             |            |
| Events   | ✓             | ✓          |
| Video  | ✓             |            |
| Map  | ✓             |            |
| Door   | ✓             | ✓          |
| Relay  | ✓             | ✓          |
| Input  | ✓             | ✓          |
| Report   | ✓             |            |
| Configuration and Setup  |               |            |
| User   | ✓             |            |
| Access level   | ✓             | ✓          |
| Schedule   | ✓             | ✓          |
| Holiday  | ✓             | ✓          |
| Tenant List  | ✓             |            |
| Controller and connection  | ✓             | ✓          |
| Door   | ✓             | ✓          |
| Relay  | ✓             | ✓          |
| Input  | ✓             | ✓          |
| Controller Programming<br>(KT-100, KT-200, KT-300, KT-400, KTES, IP, Direct) | ✓             |            |
| Email notifications  | ✓             |            |
| Watchlist (alarms)   | ✓             |            |



## New EntraPass Go



EntraPass Go puts you in control of your security. It enables you to interact with your EntraPass security system from anywhere at any time. This easy-to-use mobile app gives you real-time access to over 20 security tasks including: Managing and creating access cards with the ability to take a picture from your device camera and add it to the access card you just created. Of course you can lock and unlock doors but you can also request reports and export them in different formats. EntraPass Go also gives you the ability to create and assign Access Levels, list the events occurring in your system and much more.

What's new in Version 2?

- Now supports iOS 6 and iPhone5.
- Multi-Server login.
- Port field.
- Secure or non-Secure login (http or https) field.
- Various bug fixes.

**NOTE:** *EntraPass Go has been fully tested, with the following mobile devices and platforms: iPhone4, iPhone 4s, iPad2, iPad3, and Touch 3rd and 4th generation. We also tested other devices with a simulator. Tested with iOS 4, 5 and iOS 6. EntraPass Go is available for download on the Apple App Store and on Google Play. Compatible with EntraPass versions 6.00 and higher only.*

## Access Level Exception

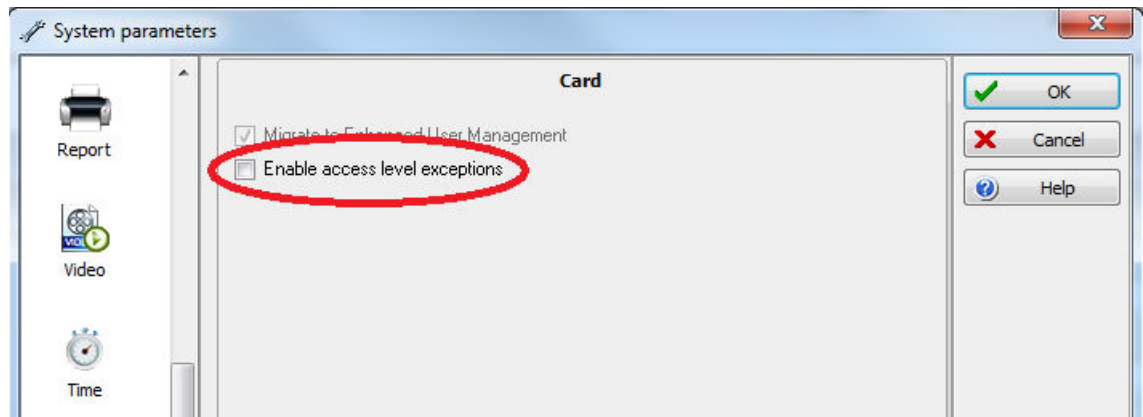
With this new feature, access level exceptions can be enabled by user for each door.

**NOTE:** *This feature is available for KT-400 controllers only or all controllers connected to a global gateway or KT-NCC.*

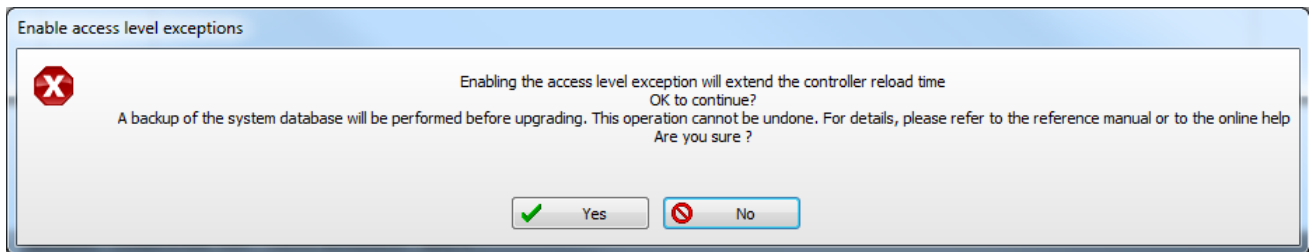
## Activation

- 1 From the **Options** menu, click **System Parameters**.
- 2 Select **Credentials** then the **Card** tab.
- 3 Select **Enable access level exceptions**.

- 4 Click **OK**.

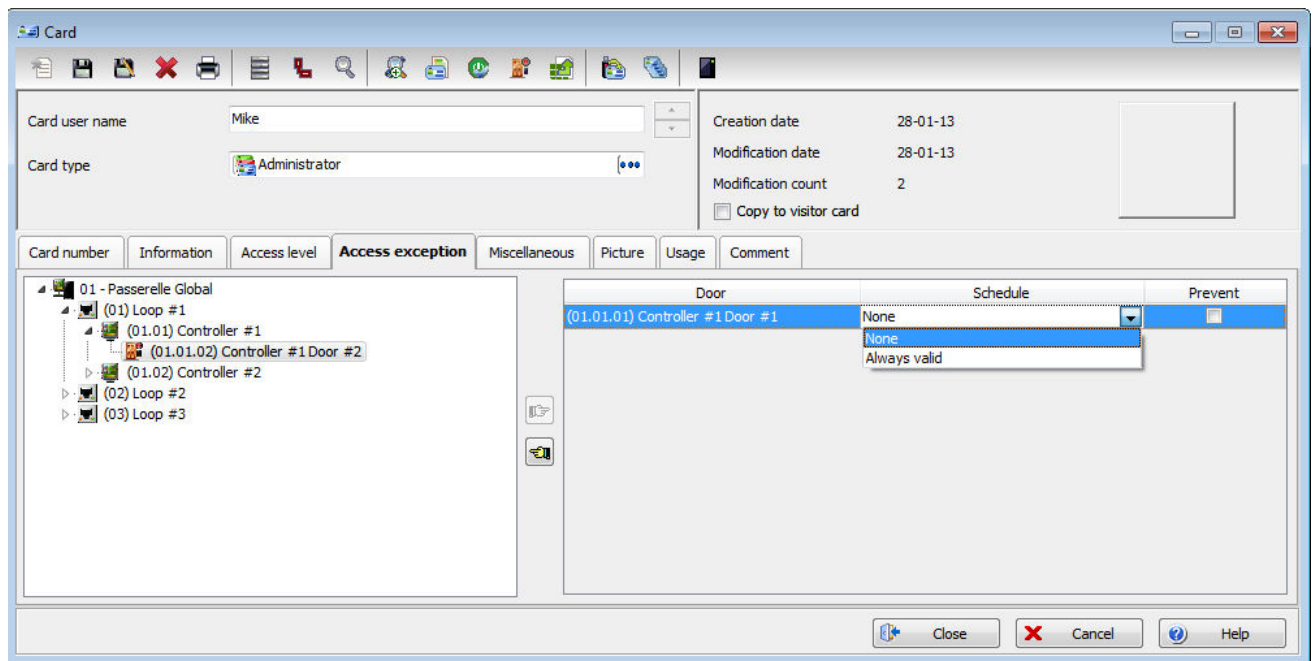


- 5 On activation, the user will receive the following warning message indicating that the controller reload process might slow down:



### Using Access Level Exception from the EntraPass WorkStation

In the **Card** window, the **Access exception** tab has been added. For each selected door on the left, a schedule can be linked to it from the right panel.

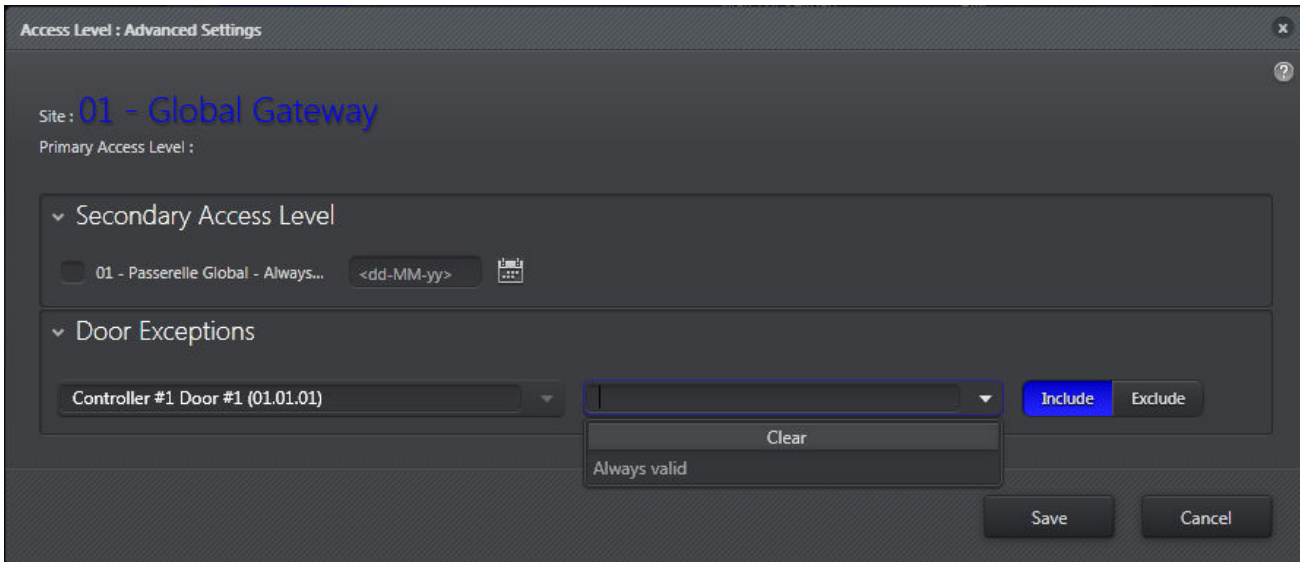


**NOTE:** Only doors with an associated schedule will be saved.

**NOTE:** If the **Prevent** checkbox is selected, access to this door will be forbidden on that schedule, no matter what the access level value is. The message displayed on the desktop will be Access denied – exception schedule.

## Using Access Level Exception from the EntraPass Web

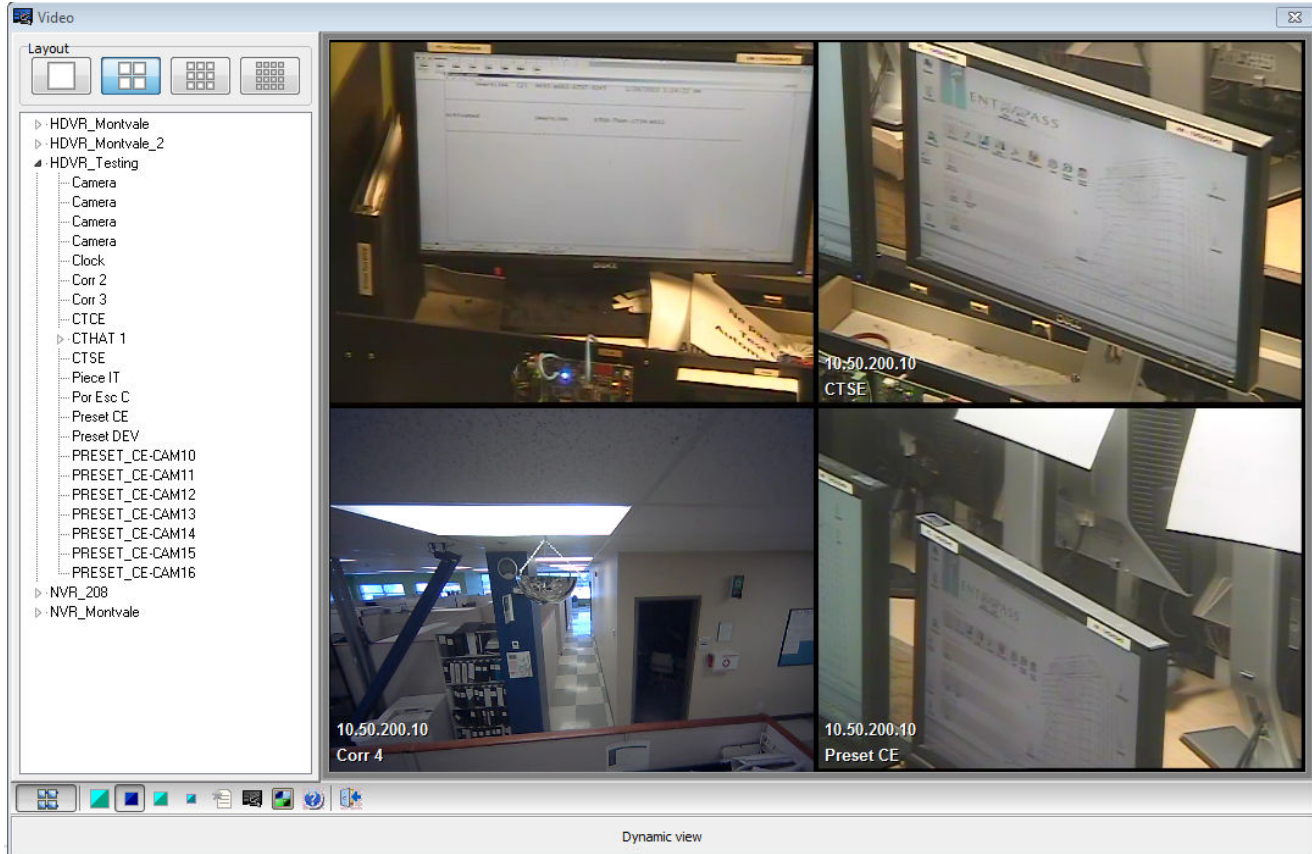
- 1 From the **Configuration** menu, click **User**.
- 2 Click the **Add** or the **Edit** button.
- 3 In the **Access Levels** section, click on a  button to display the following dialog:



The dialog box is titled "Access Level : Advanced Settings". It shows the site "01 - Global Gateway" and the primary access level. Under "Secondary Access Level", there is a checkbox for "01 - Passerelle Global - Always..." and a date field "<dd-MM-yy>". The "Door Exceptions" section contains a dropdown menu showing "Controller #1 Door #1 (01.01.01)", a second empty dropdown menu, and "Include" and "Exclude" buttons. A "Clear" button is also present. At the bottom are "Save" and "Cancel" buttons.

- 4 In the **Door Exceptions** section, click the drop-down list and select a door.
- 5 Click the second drop-down list and select a schedule.
- 6 Choose between **Include** or **Exclude** for that door.
- 7 Select another door, or click **Save** or **Cancel**.

## Dynamic Video View



The new **Dynamic View** button is now available on the toolbar. Click on it to display the list of cameras. All cameras from any supported vendor will be displayed.

- If the user makes a drag & drop of a camera from a different vendor than those actually displayed, all the other cameras (from other vendors) will be removed from the view.
- If the user makes a drag & drop of the whole video server, all the cameras will be displayed (up to 16).
- If the user closes the video desktop while in dynamic view and then reopens it, the view will display the previous camera layout.

## Panasonic Video Recorder SDK 6-00-17 Integration

EntraPass installation program now includes Panasonic SDK 6-00-17.

### Video Views Configuration

Configuring video views on a Panasonic video server is almost identical to the other video servers supported by EntraPass except that **Show overlay**, **Show metrics**, **Auto-hide text** and **Enable image zoom** are not available.

## New Version of the American Dynamic SDK

The American Dynamic SDK has been updated to version 6.1.207.28 to maintain compatibility with the latest VideoEdge NVR firmware version 4.02 and also to implement an API for displaying live and playback video from VideoEdge NVR devices in the new EntraPass Web application (Silverlight).

## New Holiday User Interface

Holidays configuration has been changed to give the operator a better overall view:


The screenshot shows a window titled "Holiday" with a standard toolbar at the top. The main interface is divided into several sections:

- Holiday Selection:** A dropdown menu currently shows "Thanksgiving".
- Language Selection:** Two text input fields for "English" (containing "Thanksgiving") and "French" (containing "Action de grâce").
- Date and Recurrence:** A date dropdown set to "11-11-13" and a checked "Recurring" checkbox.
- Selective Holiday:** A checked checkbox labeled "Selective Holiday (System, Gateway and Site)".
- System / Gateway / Site:** A large empty rectangular box on the left.
- Holiday Slots:** Four slots labeled "Hol 1", "Hol 2", "Hol 3", and "Hol 4".
  - Hol 1:** Contains the text "System".
  - Hol 2:** Contains the text "01 - Passerelle Global".
  - Hol 3:** Contains the text "Main site".
  - Hol 4:** Contains the text "Secondary Site".

Below the holiday slots, a message reads: "Please drag and drop item or use arrow to move the selected component into one of the 4 holidays values". At the bottom right, there are three buttons: "Close", "Cancel", and "Help".

By default, holidays do not belong to a particular gateway anymore. If the holiday is to apply to specific sites

The screenshot shows the 'Holiday' configuration window. The 'Holiday' dropdown is set to 'Thanksgiving'. The 'Date' is '11-11-13' and the 'Recurring' checkbox is checked. The language section shows 'English' with 'Thanksgiving' and 'French' with 'Action de grâce'. The 'Selective Holiday (System, Gateway and Site)' section is active, showing a large 'System / Site' list box on the left and four holiday slots (Hol 1, Hol 2, Hol 3, Hol 4) on the right. Hol 1 contains 'System', Hol 2 contains 'Main site', and Hol 3 and Hol 4 are empty. Each slot has two arrow buttons for moving items. A footer message says 'Please drag and drop item or use arrow to move the selected component into one of the 4 holidays values'. At the bottom are 'Close', 'Cancel', and 'Help' buttons.

only, the **Selective Holiday** checkbox must be selected. Drag & drop system, sites or global gateways to the appropriate holiday case. You can also use the  buttons to move them.



**D29008656R001**

**KANTECH**

*A Tyco International Company*